



# Retatrutide 20mg

Lyophilised research compound — for in-vitro research use only

PRODUCT	BATCH	CAS NUMBER	MOL. WEIGHT
<b>Retatrutide 20mg</b>	<b>UKPL-462</b>	<b>2381089-83-2</b>	<b>4731.0 g/mol</b>
APPEARANCE	STORAGE	ANALYSIS DATE	REPORT DATE
<b>White lyophilised powder</b>	<b>-20°C, protected from light</b>	<b>25/12/2025</b>	<b>29/12/2025</b>

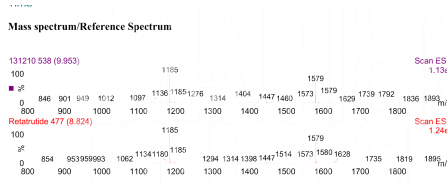
## ANALYTICAL RESULTS

TEST PARAMETER	RESULT	SPECIFICATION	STATUS
Identity	Confirmed — Retatrutide	Matches reference standard	PASS
Chromatographic Purity	<b>99.95%</b>	≥98.0%	PASS
Mass Spectrometry	[M+H] <sup>+</sup> at 4732.1 m/z	Matches MW 4731.0	PASS
Quantity Measured	21.2 mg	≥20 mg	PASS
Appearance	White lyophilised powder	White lyophilised powder	PASS

### RP-HPLC CHROMATOGRAM (UV @ 220NM)



### MASS SPECTRUM (ESI-MS POSITIVE MODE)



### COMPOUND REFERENCE

Compound	Retatrutide
CAS	2381089-83-2
Molecular Weight	4731.0 g/mol
Sequence	39 amino acid GIP/GLP-1/glucagon triple agonist
Form	Lyophilised powder

### ANALYTICAL METHOD & LABORATORY

Method	RP-HPLC + ESI-MS
Laboratory	Krause Analytical LLC
Report ID	#131210
Analyst	Dr. K. Krause
Date Signed	29/12/2025

#### Research Use Only

This product is supplied strictly for in-vitro research and laboratory use only. It is not intended for human or veterinary administration, and must not be ingested or applied to or within the body. Storage and handling are the responsibility of the end-user.